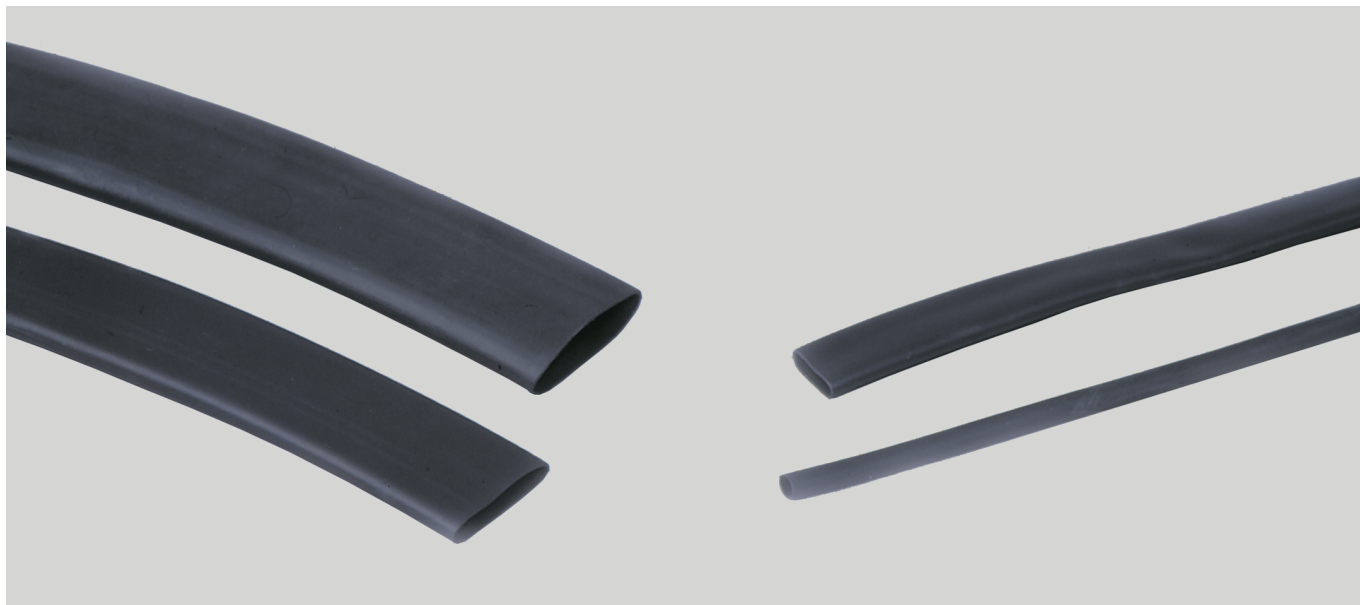


# SK-M shrink on tube 3:1 with interior adhesive

polyolefine - medium walled



## SK-M

Polyolefine shrunk tube with internal adhesive for repairing insulation and sealing electrical components.

## Application

- Plant and machine construction
- Robot construction
- Automation technology
- Vehicle construction and shipbuilding
- Installation technology
- Control cabinet construction

## Material

PO (Polyolefine) with internal adhesive

Colour: black

## Note

Form of shipment:  
1.2 m rods

## Technical data

Temperature range: -55°C up to +110°C

## black

| Part no. | Inner Ø before shrinkage mm | Wall thickness mm | Inner Ø after shrinkage mm | Content m     | Unit | Net EUR/ 100 items at a purchase of |        |         |
|----------|-----------------------------|-------------------|----------------------------|---------------|------|-------------------------------------|--------|---------|
|          |                             |                   |                            |               |      | up to 5                             | 6 - 10 | 11 - 20 |
| 99788    | 10,2                        | 2,0               | 3,8                        | rods of 1,22m | 1    | o. r.                               | o. r.  | o. r.   |
| 99789    | 19,1                        | 2,0               | 5,6                        | rods of 1,22m | 1    | o. r.                               | o. r.  | o. r.   |
| 99790    | 27,9                        | 2,0               | 10,2                       | rods of 1,22m | 1    | o. r.                               | o. r.  | o. r.   |
| 99791    | 33,0                        | 2,0               | 10,2                       | rods of 1,22m | 1    | o. r.                               | o. r.  | o. r.   |
| 99792    | 38,1                        | 2,0               | 12,7                       | rods of 1,22m | 1    | o. r.                               | o. r.  | o. r.   |
| 99793    | 43,2                        | 2,0               | 12,7                       | rods of 1,22m | 1    | o. r.                               | o. r.  | o. r.   |
| 99794    | 52,1                        | 2,0               | 19,0                       | rods of 1,22m | 1    | o. r.                               | o. r.  | o. r.   |
| 99795    | 69,9                        | 2,0               | 25,0                       | rods of 1,22m | 1    | o. r.                               | o. r.  | o. r.   |
| 99796    | 88,9                        | 2,4               | 30,0                       | rods of 1,22m | 1    | o. r.                               | o. r.  | o. r.   |
| 99797    | 119,4                       | 2,7               | 40,0                       | rods of 1,22m | 1    | o. r.                               | o. r.  | o. r.   |
| 99798    | 152,0                       | 2,8               | 48,0                       | rods of 1,22m | 1    | o. r.                               | o. r.  | o. r.   |
| 99799    | 170,2                       | 2,8               | 58,0                       | rods of 1,22m | 1    | o. r.                               | o. r.  | o. r.   |
| 99678    | 228,6                       | 3,0               | 77,0                       | rods of 1,22m | 1    | o. r.                               | o. r.  | o. r.   |

Dimensions and specifications may be changed without prior notice.

o. r. = on request