

HELU-S-PV-AL-DIN Aluminium press connector



Press connector HELU-S-PV-AL-DIN

Press connector for strain-relieved connections of conductors designed acc. to DIN 46267 part 2.

Material

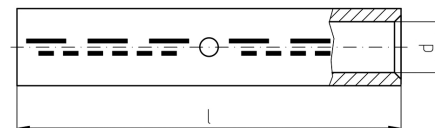
Socket: Al 99,5
Surface: bare

Note

- Code type indicates the required hexagonal crimping insert.
- Part No. 907835 is not standardized.
- Sleeves are prefilled with contact grease and sealed with plastic plug.

Technical data

Temperature range: up to +120°C



Dimensions

d Inner diameter of the cable inclusion
l Length

blank

| Part no. | Cross-section RM/SM - SE mm ² | d mm | l mm | Code type | Weight kg / 1000 items | Unit | Net EUR/100 items at a purchase of | | |
|----------|--|---------|---------|--------------|------------------------------|------|------------------------------------|-----------|------------|
| | | | | | | | up to 100 | 101 - 500 | 501 - 1000 |
| 907835 | 16 - 25 | 5,6 | 55,0 | 12 | 13,4 | 50 | o. r. | o. r. | o. r. |
| 906511 | 25 - 35 | 6,8 | 70,0 | 12 | 15,4 | 50 | o. r. | o. r. | o. r. |
| 906512 | 35 - 50 | 8,0 | 85,0 | 14 | 28,5 | 50 | o. r. | o. r. | o. r. |
| 906513 | 50 - 70 | 10,0 | 85,0 | 16 | 34,0 | 25 | o. r. | o. r. | o. r. |
| 906514 | 70 - 95 | 11,5 | 105,0 | 18 | 55,9 | 25 | o. r. | o. r. | o. r. |
| 906515 | 95 - 120 | 13,2 | 105,0 | 22 | 82,1 | 10 | o. r. | o. r. | o. r. |
| 906516 | 120 - 150 | 14,7 | 105,0 | 22 | 86,4 | 10 | o. r. | o. r. | o. r. |
| 906406 | 150 - 185 | 16,3 | 125,0 | 25 | 111,3 | 10 | o. r. | o. r. | o. r. |
| 906517 | 185 - 240 | 18,5 | 125,0 | 28 | 143,5 | 10 | o. r. | o. r. | o. r. |
| 906518 | 240 - 300 | 21,0 | 145,0 | 32 | 191,7 | 10 | o. r. | o. r. | o. r. |
| 906519 | 300 - - | 23,3 | 145,0 | 34 | 227,1 | 10 | o. r. | o. r. | o. r. |
| 906520 | 400 - - | 26,0 | 210,0 | 38 | 359,0 | 5 | o. r. | o. r. | o. r. |
| 906521 | 500 - - | 29,0 | 210,0 | 44 | 455,0 | 5 | o. r. | o. r. | o. r. |

Dimensions and specifications may be changed without prior notice.

o. r. = on request